

Impact REPORT

2024: A YEAR IN REVIEW



Table OF CONTENTS

| | |
|-----------|------------------------|
| <u>01</u> | Thank You |
| <u>02</u> | Our Impact |
| <u>04</u> | Mission in Action |
| <u>06</u> | Financials |
| <u>08</u> | Social Accountability |
| <u>10</u> | Volunteerism |
| <u>11</u> | 2024 Influencers |
| <u>12</u> | J.T. Edwards Society |
| <u>14</u> | Legacy Giving |
| <u>15</u> | Tribute Giving |
| <u>16</u> | 2024 Annual Supporters |
| <u>21</u> | 2024 Tribute List |
| <u>24</u> | Causes to Support |



Board OF TRUSTEES

REV. C. NELSON HARRIS, CHAIR
Roanoke, Va.

SALLIE MARCHELLO, VICE CHAIR
Hampton, Va.

JOHN JUNG, SECRETARY
Manakin Sabot, Va.

JAMES BALES
Newport News, Va.

SHARON BROOKS
Charles City, Va.

REV. DANIEL CARLTON
Culpeper, Va.

R. SCOTT CAVE
Midlothian, Va.

MATTHEW COBB
Richmond, Va.

SAMUEL OAKEY
Roanoke, Va.

ARNE OWENS
Henrico, Va.

JIM POATS
Lynchburg, Va.

SUSAN RUCKER
Midlothian, Va.

PRISCILLA SHULER
Bowling Green, Va.

GARY THOMSON
Richmond, Va.

REV. DR. JAMES VAUGHT
Land O' Lakes, Fl.

Leadership

JONATHAN COOK
President and CEO

TRACEY JENNINGS
Chief Operating Officer

ROBIN RANSOM
Interim Chief Financial Officer

PETER ROBINSON
Chief Marketing Officer

JODI LEONARD
Vice President of VBH Foundation

LAURA WOOTON
Vice President of Human Resources

CELIA JONES
Senior Communications Manager

ELIZABETH NEWPORT
Graphic Designer

Thank You!

A Community of Care & Generosity

Every year, the Virginia Baptist Homes Foundation raises more than \$1 million to benefit seniors living in LifeSpire of Virginia communities. This incredible impact is possible only because of people like you — residents, families, business partners, and friends — who are deeply committed to caring for those who need us most.

Gifts to the Benevolent Fund directly support eligible residents who, through no fault of their own, need additional financial resources to remain in the homes they love. In 2024, 44 residents received the gift of peace of mind through benevolent assistance.

Our mission is strengthened by giving at every level. While many gifts come from generous residents and their families, we're also grateful for the many vendors who supported our work this year. These business partners not only provide their professional expertise

but also invest financially in the lives of our residents. We are thankful for their sponsorships and belief in our shared mission.

Jodi Leonard, Vice President of the VBH Foundation, reflected on this spirit of generosity, saying: "The heart of our Foundation's mission is people — people helping people. Every gift, every sponsorship, and every dollar raised is a testament to the compassion and generosity that defines our LifeSpire communities."

In 2026, Virginia Baptist Homes will be celebrating its 80th anniversary. We look forward to honoring our history while looking ahead to a future of growth and opportunity.

Because of you, our residents know they are not alone. Together, we are building a future where every senior can age with dignity, comfort, and care.

THANK YOU TO OUR BUSINESS PARTNERS:

ALSCO Uniforms
Bartlett Tree Expert Co.
BWS Landscaping
Carter Machinery Company, Inc.
Century Construction Company, Inc.
ColonialWebb Contractors/
Comfort Systems USA
Dominion Lightworks, LLC
Evans Carpet Corporation
Folkes Electrical Construction Co., Inc.
GC Commercial, Inc.
Hershey Creamery Company
Jamerson-Lewis Construction
K & N Plumbing
L.G. Flint, Inc.
LeaderStat Ltd.
MannKidwell Shade Corporation
MG Moving Services
Perfectvision
Piedmont Window Solutions
Quality Technologies LLC
Remedi SeniorCare Pharmacy
RSG Landscaping LLC
SERVPRO of Chesterfield
Specified Tile and Floor Covering, Inc.
Vicom
WasteCo



OUR IMPACT

For more than 75 years, LifeSpire of Virginia has been a trusted leader in compassionate care, meaningful programs, and community support that enriches the lives of residents, team members, and their families. As a nonprofit, we are committed to providing exemplary senior living experiences, supporting those we serve within our walls, and extending our positive influence to the surrounding localities. Through the work of the Virginia Baptist Homes Foundation and the social accountability efforts across the LifeSpire family, we are fostering a culture of giving back and creating lasting impacts on society. We are dedicated to enriching lives and strengthening communities across Virginia.

\$1.9M+

SOCIAL ACCOUNTABILITY IMPACT
INCLUDES *BENEVOLENCE, MONETARY
DONATIONS, GOODS AND SERVICES.*

“Volunteering is a means of reaching out to my fellow men to say ‘I care about your well-being’. After all...we have only each other!”

- MELINDA DELLERT, RESIDENT, *THE SUMMIT*



\$1.2M

Benevolence

Financial subsidies
to residents.

\$647,000

Volunteerism

Total value of
19,146 volunteer
hours contributed.

\$92,000

Contributions

Cash and in-kind
contributions by
LifeSpire of Virginia
to local residents
and community
organizations.



“Volunteering is kind
of like forgiving or
sharing; the joy and
satisfaction of the
giver is far greater
than that of the
recipient.”

- DAN AND SUE CAMDEN,
RESIDENTS, *THE GLEBE*



“As an active resident at Lakewood, the volunteer work I
engage in not only benefits me mentally and physically but
also allows me to assist other residents and team members.
This work gives me a sense of purpose and makes each day’s
opportunities meaningful.”

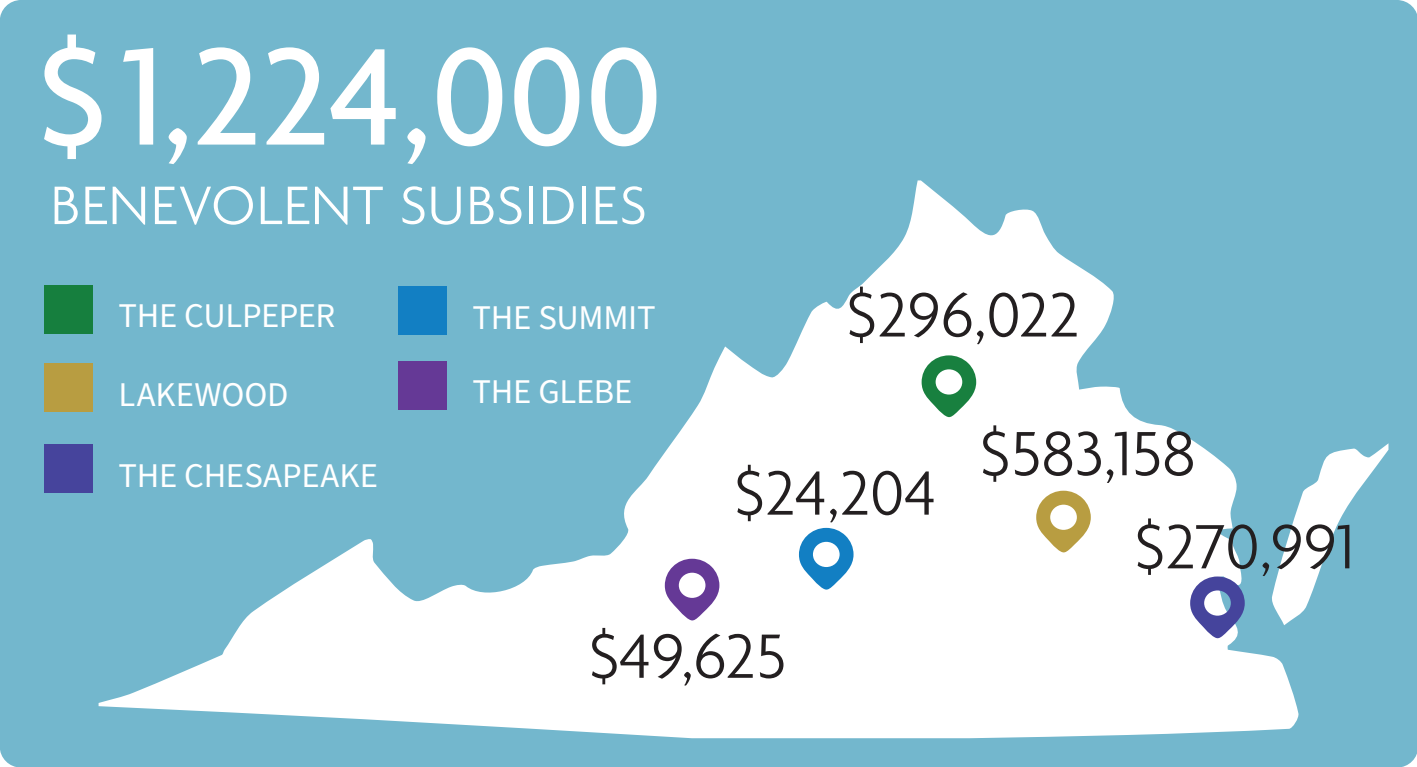
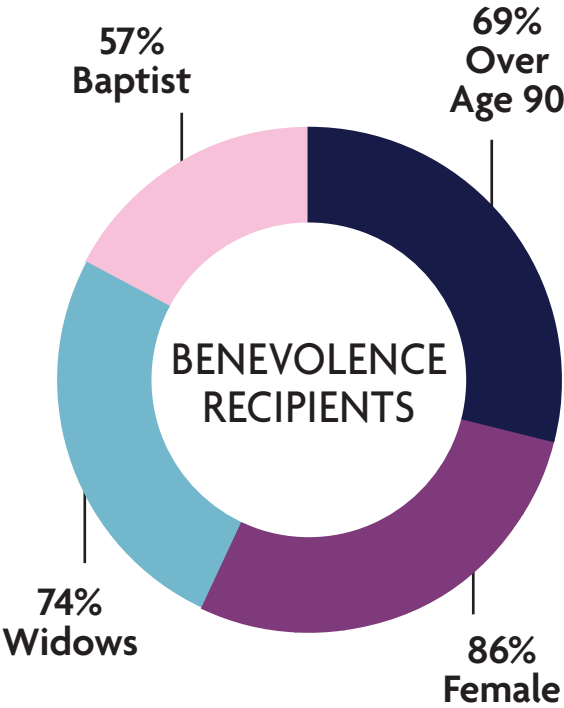
- SALLY WHEAT, RESIDENT, *LAKEWOOD*

MISSION IN ACTION

For more than 75 Years, LifeSpire of Virginia has remained committed to seniors. While our communities have grown, the mission to provide the best for seniors has not wavered. The Virginia Baptist Homes Foundation, through the generosity of loyal donors, is able to provide essential services and programs to enhance the lives of residents, no matter their level of care needs. Visit livespireliving.org/give to learn more.



THE VBH FOUNDATION IS PROUD TO HAVE EARNED A PLATINUM TRANSPARENCY SEAL THROUGH GUIDESTAR/CANDID



OVER \$1.8M

TOTAL CHARITABLE GIFTS RECEIVED

Gifts Received BY CAUSE



\$1,207,417

Benevolence



\$96,306

Charitable Gift Annuities



\$404,578

Special Projects



\$23,872

Employee Crisis Fund



\$25,462

Community General Donations



\$18,485

Endowment Funds



\$78,848

Spiritual Life



\$24,557

Employee Education Fund

Gifts Received BY ENTITY



\$651,089

Trusts & Estates



\$1,013,256

Individuals



\$215,180

Churches, Foundations
& Corporations

FINANCIALS



CHECK OUT OUR FINANCIAL DISCLOSURE STATEMENTS HERE!

On a consolidated basis, 2024 marked a pivotal year of investment for LifeSpire, setting the foundation for continued growth. Encouragingly, our net asset position improved by \$2.5M, demonstrating financial resilience and a determined strategic positioning. Despite continued industry-wide challenges such as staffing pressures and inflation, our communities achieved strong occupancy thanks to the dedication of our operating teams and their unwavering focus on resident care. We remain firmly committed to our strategic plan and we are actively expanding and enhancing our communities and services to empower our residents and position LifeSpire for sustainable success in the years ahead.

LifeSpire remains comfortably in compliance with its debt covenants, and its debt remains rated “BBB” by Fitch Ratings, Inc. For more details, please see the most recent tax-exempt bond continuing disclosure (“EMMA”) filing on our website: lifespireliving.org/financial-disclosures



INCOME STATEMENT

2024

2023

STATEMENT OF OPERATIONS

| | | |
|--|-----------------|-----------------|
| Operating Revenue | \$ 132,610 | \$ 122,455 |
| Operating Expense | 132,618 | 121,222 |
| Operating Income | \$ (8) | \$ 1,233 |
| Unrealized Gains (Losses) | 4,111 | 7,109 |
| Other Nonoperating Gains (Losses) | (2,317) | (517) |
| Increase in Unrestricted Net Assets | \$ 1,786 | \$ 7,825 |

STATEMENT OF CHANGES IN NET ASSETS

| | | |
|---|--------------------|--------------------|
| Increase in Net Assets Without Donor Restrictions | \$ 1,786 | \$ 7,825 |
| Increase in Net Assets With Donor Restrictions | 733 | (152) |
| Increase in Net Assets | \$ 2,519 | \$ 7,673 |
| Net Assets - Beginning of Year | (30,560) | (38,233) |
| Net Assets (Deficit) - End of Year | \$ (28,041) | \$ (30,560) |

BALANCE SHEET

2024

2023

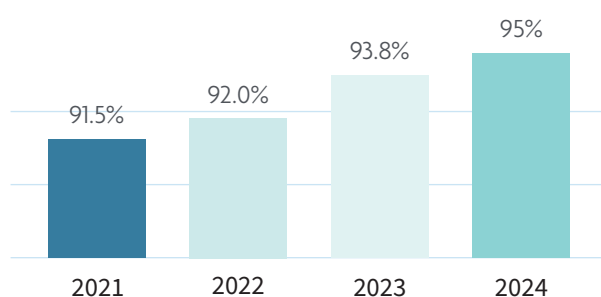
ASSETS

| | | |
|------------------|-------------------|-------------------|
| Current | \$ 42,677 | \$ 56,039 |
| Long-Term | 217,264 | 90,586 |
| Net Fixed Assets | 288,620 | 271,090 |
| Total | \$ 548,561 | \$ 417,715 |

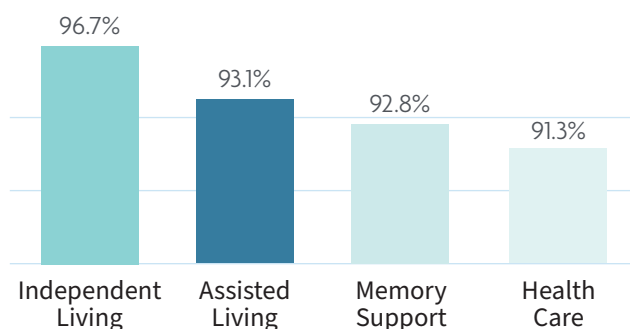
LIABILITIES & NET ASSETS

| | | |
|------------------|-------------------|-------------------|
| Current | \$ 41,818 | \$ 38,618 |
| Deferred Revenue | 120,462 | 118,762 |
| Other | 58,304 | 59,695 |
| Long-Term Debt | 356,018 | 231,200 |
| Net Assets | (28,041) | (30,560) |
| Total | \$ 548,561 | \$ 417,715 |

AVERAGE OCCUPANCY TREND



AVERAGE OCCUPANCY 2024



GREATER COMMUNITY ENGAGEMENT & SUPPORT

SOCIAL ACCOUNTABILITY



Social accountability for a nonprofit organization is the impact that organization has on its wider community. It is a measure of an organization's commitment to its mission, stakeholders and the greater community. Each LifeSpire of Virginia community, along with the Virginia Baptist Homes Foundation, is significantly impacting its locality. As part of our vision of vibrant living where faith, wellness and community flourish, that community extends around each residence. Check out the full list at lifespireliving.org/social-accountability/



The Summit

The Summit supported multiple causes by donating to the Alzheimer's Association, Brookville Fire Department, Sandusky Elementary School, The Salvation Army, Holy Cross, Goodwill, Lynchburg Daily Bread, Timberlake Church Preschool, Mission Thrift, YWCA Central Virginia, Raspberry Hill, Home Sweet Home Program, CraveABLEs, Lions Club, Free Foundation, and ParkView Teal Bag Drive. **The Summit donated over \$19,000 worth of monetary gifts, goods, and services to the greater Lynchburg area.** In 2024, 23 volunteers at The Summit tracked and submitted their hours. Residents submitted over 1,100 hours of volunteer service, valued at \$38,016.*

Lakewood

Lakewood raised significant funds for the Alzheimer's Association, provided meeting spaces for various organizations, donated food to FeedMore, and contributed hand-knitted items to St. Mary's Hospital. **Lakewood donated over \$102,000 worth of monetary gifts, goods, and services to the greater Richmond area.** In 2024, 106 volunteers at Lakewood tracked and submitted their hours. Residents submitted over 9,000 hours of volunteer service, valued at \$316,142!*



*Value of a volunteer hour in Virginia was \$33.80 in 2024.

LifeSpire & VBHF

LifeSpire and VBH Foundation support to local causes include sponsoring the Cristo Rey Richmond High School work-study program, donating to the EverBless Foundation Scholarship Program, providing emergency housing through the Fresh Start Home in Newport News, donating disaster relief funds to the LeadingAge NC Foundation, and funding a grant to the Area Congregations Together in Service (ACTS). **The VBH Foundation donated over \$91,000 worth of monetary gifts, goods and services to organizations across Virginia.**



The Culpeper

The Culpeper donated hand-knitted Afghans to McGuire Hospital, provided meeting spaces for local organizations, and supported various causes including Hospice of Piedmont and Girls on the Run. **The Culpeper donated over \$24,000 worth of monetary gifts, goods, and services to the greater Culpeper area.** In 2024, 19 volunteers at The Culpeper tracked and submitted their volunteer hours. Residents submitted over 1,300 hours of volunteer service, valued at \$46,597!*



The Glebe

The Glebe raised funds for the Alzheimer's Association and The Lampstand of Virginia. **The Glebe donated over \$6,000 worth of monetary gifts, goods, and services to the greater Daleville area.** In 2024, 40 volunteers at The Glebe tracked and submitted their hours. Residents submitted over 3,500 hours of volunteer service, valued at \$122,467!*



The Chesapeake

The Chesapeake supported local causes by hosting appreciation events for Newport News First Responders, donating supplies to Peninsula Catholic High School, Menchville House, Peninsula SPCA, Seaford Elementary School, and Peninsula Rescue Mission. **The Chesapeake donated over \$4,000 worth of monetary gifts, goods, and services to the greater Newport News area.** In 2024, 30 volunteers at The Chesapeake tracked and submitted their hours. Residents submitted over 3,000 hours of volunteer service, valued at \$104,746!*

Volunteerism

2,570 HOURS

RESIDENT SERVICE ON COMMITTEES AND COUNCILS

Committees Include: Activities, Dining, Buildings and Grounds, Resident Council, Memorial, Spiritual Life, Hospitality, Heritage, Recycling, Finance, Wellness and Fitness and others!

8,915 HOURS

PROGRAMMING SUPPORT

Opportunities Include: Mail Delivery, Library Volunteers, Flower Arranging, Religious Services Support, Thrift Shop Volunteers, Crafters, MC/AV volunteers, Ringers, Singers, Program Volunteers and much more!

5,709 HOURS

VOLUNTEERING IN THE GREATER COMMUNITY

Opportunities Include: CrossOver, FeedMore, local area churches, Carver Elementary, Seaford Elementary School, Red Cross, Meals on Wheels, local food pantries, local county government, Read Mountain Middle School, Perrymont Elementary School, local hospitals, and many more!

1,032 HOURS

SUPPORTING HIGHER LEVELS OF CARE

Volunteering Includes: Visiting in Memory Support, Assisted Living, and Healthcare, providing one-on-one support, playing musical instruments, engaging in exercise activities, and offering spiritual support through hymn sings, Bible readings, and prayer.

9,000+ HRS

LAKEWOOD

1,300+ HRS

THE CULPEPER

3,500+ HRS

THE GLEBE

3,000+ HRS

THE CHESAPEAKE

1,100+ HRS

THE SUMMIT

Hazel Harrison,
Influencer at The Summit



CHECK OUT OUR INFLUENCER STORIES HERE!

INFLUENCERS

The LifeSpire of Virginia communities believe in a future where faith, wellness, and community spirit lead the way. To celebrate National Volunteer Appreciation Month in April, LifeSpire and the VBH Foundation launched a company-wide volunteer celebration campaign.

Appreciation events were held at each LifeSpire community, honoring the dedication and service of residents who give their time, talents, and treasure to make their communities wonderful places to live. Residents and team members make a difference every day through their service and dedication.

Each year, we also recognize a resident from each community whose spirit, engagement, and generosity make a lasting impact. These “Influencers” are models of service and generosity, often leading the way in their community’s volunteerism. The 2024 class of Influencers are true champions within their communities, making a positive impact on their neighbors.

In 2024, the Influencer Award celebration was combined with the Volunteer Appreciation Celebration, recognizing that our Influencers have always been leaders in their volunteer service for

their communities. Each community presented awards to the Influencers at their Volunteer Appreciation Celebration Event.

Thank you to ColonialWebb, a Comfort Systems USA Company, for sponsoring the entire Volunteer Appreciation campaign! A trusted partner in our mission to support seniors for over a decade, ColonialWebb with Comfort Systems USA was the Featured Sponsor for 2024 Volunteer Appreciation.

The 2024 Influencer Award recipients were:

- Linda Jones
Lakewood
- Phyllis Turner
The Culpeper
- Tom Sayre
The Chesapeake
- Hazel Harrison
The Summit
- Anne Brugh
The Glebe

You can read more about these remarkable individuals and their contributions to LifeSpire and their communities by visiting lifespireliving.org/give/influencer-awards





EDWARDS SOCIETY

1946

In January 1946, Culpeper was approved as a site to build a home for senior adults, and the certificate of incorporation was signed and filed with the Culpeper clerk's office on March 25 of that year. Originally registered as Virginia Baptist Home for the Aged, Inc., the charter was amended in 1954 to change the name to Virginia Baptist Homes, Inc. It was Dr. J.T. Edwards who first introduced the idea of this home for senior adults to the Baptist General Association of Virginia. Almost eighty years later, his vision continues to thrive and expand.

1996

The J.T. Edwards Society was established in 1996 to honor those who support the legacy of Dr. Edwards through any form of planned giving, including bequests, charitable gift annuities, charitable remainder trusts or gifts of life insurance. These gifts provide us with the ability to plan for the future success of this ministry.

TODAY

J.T. Edwards Society members extend a lifetime of support through gifts, volunteer hours and membership. Like Dr. Edwards, these visionary individuals are leaving their own legacy for future residents of Virginia Baptist Homes, and we are proud to honor them through their membership in this society.

| | | |
|---------------------------|-------------------------------|---------------------------|
| Barbara J. Begor | R. Craig and Sharon W. Hopson | Hap and Kay Robson |
| Ruth Bokun | Peyton and Nancy Jefferson | Bonnie Shelton |
| Curtis and Dee Brooking | Latham and Linda Jones | Patricia Sloan |
| Jacquelyn K. Brooks | Michael and Joan Keck | Mary Small |
| Bessie Brooks | Maurice C. Law | Walter O. Smith, III |
| Bert and Rose Browning | George and Virginia Leftwich | Ann Ruckman Smith |
| Montgomery Cale | Thomas and Elizabeth Mabe | Beula Sprague |
| Jeannette Cantrell | Guy and Vivia Mattox | Elizabeth A. Stevenson |
| Hilary and Gina Claypool | Joyce G. McCall | Rita Morgan Stone |
| Carolyn Coffman | Donald and Lida McKinney | William and Nancy Trimble |
| Jonathan and Barbara Cook | Joy McNabb | Violet C. Varner |
| Robert Copenhagen | Rachael D. Mothena | Julia Weikle |
| Anne daCosta | Barbara W. Murphy | Jacquelin A. Werb |
| Kathryn Davis | Margaret J. Oliver | 11 Anonymous Donors |
| Carole Edwards | Elizabeth Payne | |
| Emily W. Fitzgerald | Elizabeth Ann Peterson | |
| Linda Fleshman | Hunter Riggins | |
| Nelson and Cathy Harris | Randall and Linda Robinson | |
| Monica Hillery | J. Peter Robinson | |



MEMBER

HIGHLIGHT:

Rita Morgan Stone

“ I like the word benevolence. One of its meanings is kindness, which sometimes seems in short supply in our world today. It is with gratitude that I may participate in the J.T. Edwards Legacy Society and perhaps bring some cheer to a fellow resident. ”

- Rita Morgan Stone



Rita Morgan Stone, a longtime resident at Lakewood, chose to support the benevolent need at her community through a planned gift. Rita's involvement in the community has included service with the Resident Council, Resident Advisory Committee, Food Committee and Heritage Committee. Her most recent volunteer service includes teaching English as a Second Language (ESL) to team members. Kindness is what drives Rita to give of her time, talent and treasure to her friends, neighbors and employees.



LEGACY GIVING

In 2024, 43 donors made their ultimate gift to LifeSpire through estate planning. Some created trusts that provide annual income to support benevolence and our communities, while others gave through bequests. The LifeSpire family is humbled by these generous expressions of faith. While their passing saddens us, we remember the way they lived—with love and kindness for others.

Estate of Martha C. Almario

Hatcher Broadus and Therma Valentine Baxter Living Trust

William Hirst Bell and Annie Lee Bell Memorial Fund

Inez Duff Bishop Charitable Trust

Alma P. Bryan Trust

Culpeper Endowment Fund

Alton Carlton Elder Trust

John W. and Ruth B. Elmore Trust

David J. & Edith Evans Trust

Stanford L. Fellers, Jr. Memorial Trust

Mr. and Mrs. R. E. Graves Trust

Edward Russell Gray Memorial Fund

Estate of Shirley M. Guy

Woodford B. Hackley Trust Fund

John T. & Mamie Harris Trust

Laura J. Harris Trust

Lizzie Harvey Trust

Charlie Hatchel Living Trust Fund

Samuel W. Holdcroft Trust Fund

Ira C. and Bertha Johns Hopkins & Nancy Hopkins Bryan Fund

C. Kenneth Horner Trust

Mary B. Hudson Trust Fund

Ora Jones Trust

Yvonne Stewart Kelly Fund

Alice Ruth and Willie Parr Lewis Trust

Mr. and Mrs. Wilbur Jason Lyttle Living Trust Fund

Catherine H. Mahoney Trust

Estate of James E. Mallory

Lloyd C. and Ruth C. Moore Trust

Estate of Bolling H. Nalle

Estate of Elizabeth A. Nalley

Gilbert West, Opal N. McCormick Quesinberry Living Trust Fund

Emily C. Ramstetter Trust

James M. and Ida F. Rose Trust

Waller J. Rucker and Sallie M. Rucker Trust

Loraine Russell Trust

Estate of Jean Sims

J. Robert Stiff Memorial Trust

Hubert T. Thornhill Trust

Robert A. Treacle Trust

James T. Tunstall Trust

Georgia T. Witt Fund

2 anonymous donors

2024 SUPPORTERS



We extend sincere appreciation to every donor! Whether your gift provided comfort and security to seniors in need through benevolence or supported a special project or a team member fund, you made a difference and touched the lives of the entire LifeSpire family. Thank you to all our supporters for investing in our mission to serve seniors. A full roster of donors can be found on pages 16 - 21.

LEADERS:

Baptist General
Association of Virginia

John and Callie Bowers

Martha Bradshaw

Ian and Cheryl Breedlove

Jacquelyn K. Brooks

Kent and Ann Brown

Daniel and Sue Camden

John and Kay Cary

Colonial Webb Contractors/
Comfort Systems USA

Jonathan and Barbara Cook

Delilah Copenhaver

Culpeper Baptist Church

Estelle Dixon

Robert Forrest

GC Commercial, Inc.

Donald and Martha Grenier

Maynard Harris

Homecoming

Robert and Shirley Houck

Barbara Howell

Robert and Barbara Johnson

John and Alida Martin

Robert and Vita McCall

Mary McCormick

Mark and Sherry Mikuta

Hunter Riggins

Hap and Kay Robson

Patricia Sloan

Ann Ruckman Smith

Gary and Jane Strebel

Randall Street

Elizabeth R. Thomas

Jim and Jeanne Vaught

Leo and Madalene Walsh

1 anonymous donor

**Board of Trustees - 100%
Giving Participation**



TRIBUTE GIVING:

Each holiday season, the Virginia Baptist Homes (VBH) Foundation sponsors an Honor Tree in each of our resident communities. All loved ones who were honored or remembered by a gift made through the VBH Foundation at any time in 2024 had their names placed on the Honor Tree in their community. Ornaments were also created for those residents who passed away during the year.

“Tribute Giving” is a significant way that donors give to the VBH Foundation every year. In 2024, nearly 400 gifts were received in memory of or in honor of a loved one, generating well over \$75,000 in support. A full listing of those who were honored in 2024 can be found on pages 22 - 23.

2024 SUPPORTERS

INDIVIDUALS:

Annette M. Acree
Louis Adams
Raymond and Pam Adkins
Jacqueline Ahmed
John and Mary-Margaret Albertella
Ann Alder
Howard and Sharon Alm
Linda Anderson-Robinson
Sarah Archie
Tammy Arnette
Pamela Ash
George C. Ashby Jr.
Robert Averill
David Babbitt
Fred and Ann Bagwell
April Bailey
Dave and Sharon Bailey
Bruce and Rhonda Baker
Mrs. Casey Baker
James and Diane Bales
Thomas Bales
Philip and Shari Barber
Shirley Barlow
Margaret Barnett
Suzanne Barnett
William Bateman
Bruce Bates
Victor and Barbara Battaile
Virginia Bauserman
Andrew and Virginia Beale
Betsy Beasley
Josephine Bediako
Barbara J. Begor
Kenneth Benjamin
Mr. and Mrs. Bennett
David and Linda Benson
William and Barbara Benson
Lynelle Bishop
Edwin Bittner
Rob Blackmore
Joan Blackwell
Kaitlyn Bland
Margaret Blank

Barbara Blauvelt
D. Wayne and Nina Blevins
Norbert Bliley
Richard Blocker
Kathleen Boatwright
Ruth Bokun
David and Allison Boldridge
Paula M. Bolton
Anne Bond
Brenda Bond
Elsa Bonstein
John and Peggy Borgard
Alice Boring
Amy Bortell
Joseph and Anita Boucher
Robert and Julia Bouck
Timothy Bouck
Jean Bowden
Kay Bowden
John and Callie Bowers
Martha Bradshaw
Reva Bratton
Ian and Cheryl Breedlove
Richard and Barbara Brewer
Robert and Linda Brockman
Tamika Brogden
Curtis and Dee Brooking
Bessie Brooks
Jacquelyn K. Brooks
Nancy and Richard Brooks
Sharon Brooks
Susan and Philip Brooks
Kent and Ann Brown
Nina Brown
Wendy N. Brown
William Brown
Bert and Rose Browning
Craig and Terry Brubaker
Marcus and Lynda Brumfield
D. Buchanan
Amenta Buckner
Nancy Buhl
Jennifer Burgett

Ellen Burhans
Kenneth and Beth Burns
Rudolph Bush
Katherine Bushnell
Louise Buttermore
Ronald and Judith Buzzeo
Harold Byars
Linda Byers
Jimmie and Audrey Callison
Daniel and Sue Camden
Katie Camden
Kelsey Camire
Dorothy Canipe
Marygrace Cantilo
Keith and Debra Cantrell
Daniel and Emily Carlton
Joseph and Margaret Carr
William Carson
Robert Carter
Sharon Carter-McKenney
John and Kay Cary
R. Scott and Jill Cave
George and JoAnne Caylor
Sana Chapman
Ralph and Cathy Charity
Adrian Charles
Carl and Mary Chesley
Kan Cheung
Yolanda Childress
Fannie Christian
Marilyn Christopher
Nancy H. Clark
David Clark, Jr.
Laura Clarke
Albert Clay
Hilary and Gina Claypool
Peter and Paulette Clement
Roland and Jacquelin Clement
Matthew Cobb
Tiffany and Josh Coffey
Pamela C. Cole
Ron and Betty Collins
Georgenia Compton

| | | |
|------------------------------------|---|---|
| Jonathan and Barbara Cook | Martha Donato | Virginia Gonino |
| Larry Cooke | Gary Donithan | Joyce Goodrich |
| Thomas and Melinda Cook | Mr. and Mrs. James Duggan | Taylor and Judy Gore |
| William Coombs and Doris Thrift | William Duttweiler | Debra Gossom |
| Melva Cooper | Louise Easter | Glenda B. Gotshall |
| Delilah Copenhaver | Lynn Edris | Betty Gough |
| Robert Copenhaver | Carole A. Edwards | Wendell and Betty Graham |
| James and Carol Corson | Lou and Becky Einwick | Janice Gravitt |
| Susan Cowling | Deborah Elam | J. William and Debrah Gray |
| Oscar E. Crafton III | Nancy R. Elliott | Carolyn Greene |
| Carl Craig | Edie Ellis | Wayne and Karen Greenlaw |
| Cheryl Crawford and Marilyn Fishel | Julie Elms | Helen Madine Gregory |
| Pamela Creech | Marilyn Escalera | Wilbur Gregory |
| Marshall Crews | Tania Etheridge | Donald and Martha Grenier |
| Peggy Cribbs | Gerald and Corliss Faircloth | Jeanie Griffiths |
| Dominic and Jennifer Cristello | David Fauri and Deborah Loftis | Claire Gross |
| Thomas Crittenden | Linda Feagan | Audrey Guild |
| Carol Cruz | Donna Fetrow | Anne Gullen |
| Matthew Currey | Rebecca Fielden | Frances Gulli |
| Thomas Cutler | Ann Fink | Betty Gutzmer |
| Linda Cyr | Larry and Wanda Fischbach | Harry and Madeleine Hadd |
| Anne daCosta | Emily W. Fitzgerald | Julie Compton-Haight and Richard Haight |
| Mary Louise Dalton | Linda Fleshman | Tommy and Jerilyn Hale |
| Ron and Diane Daniel | Marjetta Flood | Delores Spain Hall |
| Sandra Daughtrey | Erik Folkes | Fred and Carolee Hall |
| Butch Davies and Marty Moon | Beverly Forbes | Joseph Hall |
| Bobby and Denise Davis | Yvonne Ford | Diane W. Halley |
| George Davis | Ann Fordham | Robert and Carol Hammond |
| Kathryn Davis | Robert Forrest | Lucy Ann Hancock |
| Kimely Davis | Maureen Foster | Jeremy Handley |
| Brenda Davis | Jo Anne Foudriat | Allison Hankins |
| Walter Dawson | James and Janice Fowler | Angela Harper |
| Lawrence Deal | Robert and Melody Fowler | Martha Harris |
| Robert and Carol Decker | Robert Fraser | Maynard Harris |
| Melinda Dellert | Jackson Fray | Nelson and Cathy Harris |
| Andrew De Tullio | Irene Frey | Hazel Harrison |
| Beth DeTullio | Marie Friedel | Norma Harrison |
| Jane DeTullio | James and Elizabeth Frye | Pauline Harrison |
| Helene DeVries | James Gafford and Loretta Jones-Gafford | Linda Hartz |
| Chad DiChristina | Gary and Judy Gallahan | Cora Harvey |
| Lary and Carol Diehl | Paul and Anne Garber | Dabney and Peggy Harvey |
| Betty Dirks | Karin Garrett | L. Dianne Harwood |
| Raeleen Dix | Charles and Carole Geiger | Lucia Hathaway |
| Brenda Dixon | Ms. Elsa Geremew | William Hauser |
| Estelle Dixon | Rachel Gilpin | Nicole Hayes |
| Harry and Barbara Dixon | Nathalie Givens | Margaret Hayes-Alligood |
| Karla Doane | Vicky Glass | Cristal Hayward |
| Eleanor Dodson | Robert and Susan Goetz | Virginia Hazelwood |
| Arlene Domaleski | Camilla and Charles Goldman | Thomas and Susan Healy |

Janice Heater
Norman and Laura Hedrick
Harry and Peggy Helton
Reed Henderson
Linda Hicks
Joyce Hile
Raymond and Aouicha Hilliard
Susan Hinton
Kenneth Hitchens
James Hodge
William H. Hodge
Glenda Holbrook
LeBron and Kay Holden
Kay Hollandsworth
Greene and Carolyn Hollowell
Alice Hopkins
R. Craig and Sharon W. Hopson
Joyce Horton
Robert and Shirley Houck
Katrina Howbert
Barbara Howell
Cynthia Howell
June Hoye
Patricia Huber
Tamara Huffman
Brian Hughes
Jesse Hughes
Joyce Hullett
Courtney Hunt
Bernadette Hunter
James Hurst
Pearson Hurst
Mary Hutchinson
Barbara Jackson-Ingram
HD Jacobs
Jim and Mia Jacobsen
Judith D. James
Margaret Jeans
Betty Jenkins
Cara Jennings
Tracey Jennings
Robert and Barbara Johnson
Carl and Douglas Johnson
Dennis and Sallie Johnson
Olivia Johnson
Emily Johnston
James Johnston
Celia Jones
Daniel and Charlotte Jones

Jamaril Jones
Jarmelle Jones
Shantae Jones
Tina Jones
Wesley and Eleanor Jones
J.J. and Connie Jung
Emily Justice
The Kammer Family
Cynia Katsorelos
Pearl Kaur
Bryan and Janet Kay
Sherri Keeney
Nancy Keller
Linda Kent
Joseph and Mary Kent
Gordon and Joan Kerby
Wendell and Mary Key
Kim Keyes
Sam and Jean Kiel
Barbara and Bradford Kile
William and Ann Kitchens
Shelby Knoble
Kelly Komornik
Eberhard Koska
Brian Kuebler and Nancy Nale
Allen and Jean Kunkel
Jetay Kuoh
Pamela Kydes
W. Douglas and Peggy Kyle
Charles Lambert
E. Frederick and Janice Langholz
James and Carolyn Lantz
Carol Latimer
Maria Lawalt
Joey Layne
Ronald and Margaret Layne
William Lee
George and Virginia Leftwich
Lisa Legeer
Margaret Leith
Ms. Lemon
Marcy Lender
Cynthia Leonard
Jodi A. Leonard
Mimi Leveille
James and Jacqueline Lewis
Vestal and Nancy Lewis
Susan Lineberry
Lorraine Lintecum

Robert Lipscomb
Patricia Liquori
David and Mary Litzinger
Nancy Lokerson
Janet Long
David and Vera Loop
Eugene and Patricia Lorge
K. Lynne and Randy Loving
Emily Lucas
Helen Lyon
Joseph Maccarone
Charles and Bertha Mackay
James MacKay
M Mallory
Katherine Marchello and Lori Cash
Louise C. Marchello
Thomas Morehouse and Sara Marchello
Louis Marchetti
Gary and Marcia Marple
Virginia Marshburn
John and Alida Martin
John Martin and Beverly Oliphant
Kristi Martin
Lauralyn Martin
Lee and Peggy Martin
Margaret Maslak
Darrel and Carroll Mason
Guy and Vivia Mattox
Erik Mauritsen
Faye Mayberry
Jo Mayfield
Gary McBean
Robert and Vita McCall
G. Edward and Susan S McClammy
Mary McCormick
Julia McCullough
Donald and Frances McDaniel
Joan McGee
James and Teresa McGehee
Stephanie McGregor
L. M. McKee
Donald and Lida McKinney
Jerry and Nancy McKnight
Lee McMillan
Joy McNabb
Peter and Kerry Mellette
Penelope Mignacca
Mark and Sherry Mikuta
Ann Miller

James and Celia Miller
Maxine Miller
Richard and Ruth Ann Miller
Ronald and Mary Miller
Tina Miller
G. William Mitchell
John and Helen Mitchell
Kenneth Monroe
Mary Beth Moody
Carolyn Moore
Earl D. and Anna H. Moore
Christine Moran
Jerry and Margaret Morris
Joseph F. Morrisette
Michael Morse
Carole Muncie
Bradley and Joanna Muranko
Barbara W. Murphy
Robert L. and Beth P. Musick
Francis and Mary Ann Myers
Bartholomew and Patricia Myles
Dennis and Phyllis Neill
Paula Nevins
Kenneth and Ramona Noland
Lovanda Novak
Robert Oakes
Sammy Oakey
Margaret Oberschmidt
Mike and Dora Oberschmidt
Chauncey and Patricia Odell
Tiffany Okes
Linda Olson
Michael J. O'Toole, Jr.
John and Barbara Outland
William and Peggy Overstreet
Arne and Arlene Owens
Terranett Page
William and Karen Pagel
Jacob Palma
Douglas G. Palmore
Leo and Patricia Panilaitis
Wanda Parker
Terry and Mary Parkerson
Tuckie Paxton
John and Lee Paylor
Dave C. Peake and Elaine Faulkner-Peake
John and Peggy Peck
Floerfida Peng
Elizabeth Ann Peterson

James and Joan Plaatsman
James and Verna Poats
Damian Polewczak
Mary Pressick
Keymon Price
Shelby Prins
Richard and Gloria Pruitt
Cecil and Carolyn Puckette
Ruth Purinton
Swarna Raghuvir
Margie W. Rainey
Douglas and Sandra Ramsey
Andrew Ramstetter
Stacey Randall
Robin and John Ransom
Rodney and Pam Redding
Sally Redfern
Barbara Redford
Brian Renga
Ivars and Pamela Renga
James Revere
Hugh and Elaine Rial
Hunter Riggins
Carol Riggs
Linda Rigsby
Myra Ringuette
Vicki Roberts
Amy Robinson
Hap and Kay Robson
Harry and June Robinson
J. Peter Robinson
Linda Robinson
Faye J. Rock
Doris Rodgers
Mitch Rodhe
Sidney and Susan Rodriguez
Jackson and Tomi Roeske
Courtney Rogers
Becky Roish
Robert and Joan Rood
Richard and Joan Rose
Claire Rosenbaum
Lila Rosenthal
Wendy Rosenthal
Randy Ross
Robert and Alice Ross
Eleanor Rowland
Michael and Susan Rucker
Michael and Helen Salt

Sally San Soucie
Phil and Lois Sanders
Thomas and Eileen Sanders
Wanda Sannicandro
Adhie Santiago
Thomas Sayre
Theodore and Baerbel Schaller
Uwe Scharf
Shirley Schindler
Nancy Schmidt
Toni Schmiegelow
Michael Schneider
Rosemary Schneider
Margaret Schwall
J. Matthew and Allyson Scott
Jane Scott
Glen and Julia Scott
Randall and Barbara Scott
Jeanne Seckel
Ben Sedlak
Jeff and Anita Sedlak
Grace Seither
James and Betty Rose Sexton
Larry and Gloria Sheppard
William and Lynn Shewey
Priscilla and Edwin Shuler
John and Mary Siegle
Holly Siegle
James Silverstrim
John Simmers
Ruth Simmons
David and Beatrice Sink
Patricia Sloan
Courtney Small
Mary Small
Ann Ruckman Smith
Daniel and Diane Smith
Eldridge and Valerie Carter Smith
G. Louis and Olivia Smith
Larry and Ginny Smith
Linda Smith
Walter O. Smith, III
John Smithey
Charles and Shirley Smoot
Michael Snoddy
Shirley Snow
Kay Sommers
Ray and Constance Sorrell
Ann Spangler

James and Hilda Spitz
Betty Stagg
Michelle Stanley
Virginia Stay
Dawn Steele
Stephanie Steele
Elizabeth A. Stevenson
Marilyn Stewart
Olivia Stickley
Shari Stilley
Katherine Stone
Rita Stone
Jayne Storey
Gary and Jane Strebel
Randall Street
Maree Stroud
George C. Stuckey
Brad Swartzel
John and Julia Talbert
Jane Tanner
Cathy Tate
Roger and Mary Tatem
Max Taylor
Pamela Taylor
Richard and Jane Taylor
Joseph Teefey and Judy Collins
Shirley Temple
Carolyn Thiedke
Betty Thomas
Donna Thomas
Elizabeth R. Thomas
William and Susan Thomas
Jacob Thompson
Jillian Thompson
Sabrina Thompson
Gary Thomson
James Thornton
Danielle Thruston
Gregg Tiller
Price and Leah Timmerman
William and Nancy Trimble
William and Emily Tuck
Stephen and Melba Tyler
Frances Unruh
Helen Valin
Melissa Valyo-Smith
Elizabeth Vance
Michael and Carol VanHoosier
Patricia Vastano

Cindy Vaughn
Jim and Jeanne Vaught
Linda Verdery
Marsha Wagner
Gary Wahlert and Arlene Larimer
Howard and Camilla Wainwright
Ronald Walczak
Lee and Virginia Waldron
Michael and Sandra Walker
Sandra Wallace
Denise Walsh
Leo and Madalene Walsh
Edward and Gayle Walthall
Julie G. Walton
Wanda Walton
Rowland and Barbara Wampler
Joanne Ward
Stephen and Robin Ward
Joseph and Carolyn Lee Warden
Joanne Watkins
Mary Webb
Shelton and Mary Webb
Betty Wenger
Jacquelin A. Werb
Aaron West
Ellis and Phyllis West
Betty Wheat
Sally Wheat
Gail White
Ginger White
Nancy White
Rolfe and Sarah White
Martha Whorton
Pamela Wiegandt
David and Kay Wilberger
Earl and Theresa Wilkins
Gertrud Williams
Margaret D. Williams
Michael Williams
Susan Williams
Elizabeth Wilson
Geraldine Wilson
Harold and Henrietta Wilson
Nancye Wilson
Phyllis Wilson
Toni Wiltshire
Nancy Wingfield
Hillary Winkelman
Sue Winston

Kevin and Gloria Winters
Neal and Laura Witcher
Thomas and Barbara Witmer
Janetmarie Wolfe
Caleb Wooldridge
Tammi Woolridge
Deborah Wooten
Gray and Diana Wooten
Laura Wooton
Robert and Martha Wright
Donna Yatsko
Archer and Elaine Yeatts
Charlotte Yeatts
Jeanne Yuk
57 anonymous donors

CHURCHES:

Alum Spring Baptist Church
Antioch Baptist Church
Averett Baptist Church
Baptist General Association of Virginia
Black Creek Baptist Church, Franklin
Braddock Baptist Church
Bundys Chapel Baptist Church
Burdette Baptist Church
Carmi Baptist Church
Cedar Baptist Church
Culpeper Baptist Church
Deerfield Baptist Church
Derbyshire Baptist Church
Dundas Baptist Church
Elk Creek Baptist Church, Mineral
Enon Baptist Church
Fairport Baptist Church
First Baptist Church, Gretna
First Baptist Church, Martinsburg
First Baptist Church, Richmond
Greenwood Baptist Church
High Point Baptist Church
Hillcrest Baptist Church, Danville
Hillcrest Baptist Church, Ridgeway
Madison Heights Baptist Church
Mattaponi Baptist Church
Melville Avenue Baptist Church
Mill Creek Baptist Church
Mount Tabor Baptist Church
Mountain Plain Baptist Church
Mountain View Baptist Church,

Meadowview
Nelson Baptist Church
Newsoms Baptist Church
Plantation Road Baptist Church
Potomac Baptist Church
Providence Baptist Church, Henry
River Road Church, Baptist
Rodgers Chapel Baptist Church
Salem Baptist Church
Samaria Baptist Church
Sedley Baptist Church
Shadowlawn Church
Southern Baptist Conservatives of Virginia
Stevensburg Baptist Church
Union Chapel Baptist Church, Clarksville
Union Hill Baptist Church
Washington Baptist Church
Waterford Baptist Church
Waverly Baptist Church

FOUNDATIONS & ORGANIZATIONS:

7 Hills Art Club
ALSCO Uniforms
Bartlett Tree Expert Co.
BWS Landscaping
Carter Machinery Company, Inc.
Century Construction Company, Inc
The Chesapeake
City Optical
Cloverleaf Nook
ColonialWebb Contractors/Comfort System USA
Covington Pizzeria Inc.
The Culpeper
Cumberland Fair Association
Daleville/Fincastle Lions Foundation
Dominion Lightworks, LLC

Dowda Senior Placements LLC
The Dunlap Cogswell Foundation
Evans Carpet Corporation
Fishing Bay Yacht Club
Folkes Electrical Construction Co., Inc.
GC Commercial, Inc.
The Glebe
Residents' Council of The Glebe
Glenmore Yoga & Wellness Center
Hershey Creamery Company
Homecoming
J Photography
Jamerson-Lewis Construction
Junior Woman's Club of Hilton Village
K & N Plumbing
Kroger Community Rewards
L.G. Flint, Inc.
Lakewood
LeaderStat Ltd.
Lynchburg Symphony Orchestra
MannKidwell Shade Corporation
MG Moving Services
Parklawn-Wood Funeral Home
Perfectvision
Piedmont Window Solutions
Portico
Quality Technologies LLC
Remedi SeniorCare Pharmacy
Richmond Area Daylily Society
RSG Landscaping LLC
SERVPRO of Chesterfield
Shear Style Salon
Specified Tile and Floor Covering, Inc
The Summit
Tamara Lemon, A Fresh Take On Organization
Vlcom
WasteCo
1 anonymous foundation

Every effort has been made to ensure that each donor is included correctly. If you made a gift in 2024 and your name has been omitted or listed incorrectly, please accept our sincere apology and contact us at (804) 521-9213 so that we may accurately acknowledge your gift.

2024 TRIBUTE LIST

IN HONOR OF:

| | | |
|-------------------------|-------------------------|----------------------|
| James R. Barrett | Anne daCosta | Uwe C. Scharf |
| Sally Barrett | Marquis Deardorff | Shelli Schinkus |
| Jane A. Berkeley | Maggie C. Drewry | Darryll D. Schneider |
| Joan A. Bishop | Larry Evans | Dustin L. Schneider |
| Brenda G. Bond | Susan Evans | Betty Rose Sexton |
| Julia B. Bouck | Sue Gerloff | James T. Sexton |
| Allen R. Brown | Marie M. Glady | Ann R. Sheriff |
| Charlotte G. Brown | Peggy A. Harding | Daniel K. Smith |
| William Byron | Marvin Jacobs | Billy Tanner |
| Daniel M. Camden | Linda Jones | Mike Tessieri |
| Sue C. Camden | Lakewood Nursing Staff | Ernest Trueblood |
| Valerie D. Carter Smith | Louise C. Marchello | Julie G. Walton |
| Carolyn R. Coffman | Elizabeth Meyer | Betty S. Wheat |
| Jonathan R. Cook | James W. Moore | Margaret A. Williams |
| Nell Courtney | Sandra J. Moore | Stacey E. Wilson |
| Susan C. Cowling | Muncie Family & Friends | Thomas F. Woods |
| Pamela Creech | Hans Murdock | Charlotte Yeatts |
| Thomas S. Crittenden | Ruth E. Purinton | |
| Kenneth Cunningham | Ivars Renga | |
| Mary Ann Cunningham | Anna L. Rivers | |

IN MEMORY OF:

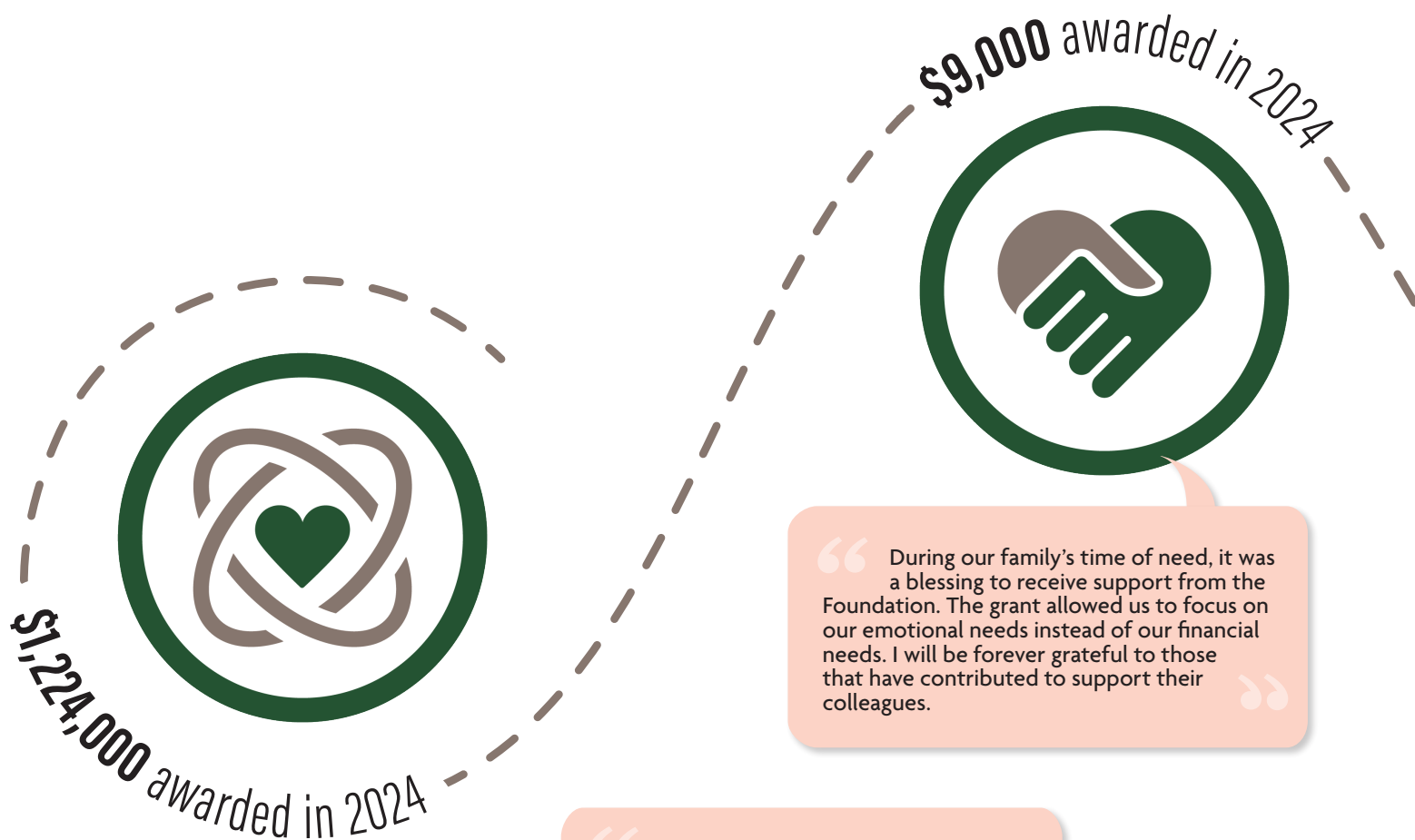
| | | | |
|--------------------|--------------------|----------------------|--------------------|
| Robert W. Allen | Martha Blocker | John M. Buhl | Carrie A. Claypool |
| James O. Ash | Mary. C. Boldridge | David D. Burhans | Dennis P. Claypool |
| Lois August | W. F. Boldridge | Iva Burke | Robert D. Coffman |
| Jeanne W. Ayscue | Bob Boring | Frances H. Burns | Robin L. Coker |
| Phyllis Baker | Stewart T. Bowden | Nancy H. Bush | Alan W. Compton |
| Betty Jo Bates | Sarah C. Bowers | Annie L. Butler | Pauline Cooke |
| Marvin L. Bates | James B. Brannon | William Byron | Maggie Corradi |
| Louise S. Batten | John E. Brooks | Rosalie M. Byron | Ruth L. Davies |
| Pauline M. Beasley | Richard M. Brooks | Michael Carver | Billy J. Davis |
| Robbie P. Beasley | Russell J. Brooks | Evaline Catron | Kathryn Y. Davis |
| Thomas Berry | David A. Brown | H. Stanley Chappell | Ann H. Deal |
| Edwin L. Bishop | Frances L. Brown | Bernice S. Childress | Carroll T. Deal |
| Thomas Blackstock | James I. Brumbaugh | E. Todd Clark | Vera N. DeFreitas |

| | | | |
|-----------------------|----------------------|----------------------|-----------------------|
| Brenda R. Dellis | William Johnston | Shirley Norris | James K. Solomon |
| Lary Diehl | Patricia Jones | Joseph Olney | Sarah F. St. Clair |
| Bettie B. Dietler | Verna R. Jones | Marcia Z. Osborne- | Mollie Stevens |
| Nancy J. Dietrich | Urban Joseph | Evans | Virginia M. Stone |
| Inez DiGiuseppe | Elizabeth Jupinko | Doris A. Otey | Sue T. Strother |
| Stewart R. Dodson | Martha L. Keesee | William N. Pace | Marian F. Tate |
| Ayleen Durrer | James S. Key | John H. Paffen | Jeffrey Taylor |
| Brenda Fastabend | Kathryn Krosschell | Granville R. Patrick | Doris H. Thurston |
| Beulah Ferguson | Mary P. La Moynes | Kendall W. Patterson | Katherine Turner |
| Jack E. Fincham | Townsend H. Lalonde | James Paxton | Frances W. Twiss |
| Victoria Forrest | Sue W. Leary | Edna K. Paylor | Katheryn B. Tyler |
| Ed Foudriat | Howard C. Levitt | Sadie L. Payne | Jewell Tyndall |
| Paul Fournier | Sue Lipscomb | Thomas W. Payne | Phillip W. Unger |
| Virginia A. Fournier | William Liquori | Jane W. Perkins | Thomas Van Horne |
| Maude G. Gallagher | Carolyn H. Llewellyn | Robert A. Peter | Evalyn M. Wagner |
| Katherine Garrison | Horst H. Lonitz | Bruce C. Pfeiffer | Frank J. Wagner |
| Kathryn Gioffre | Helen M. Lyon | Arvil L. Price | Virginia T. Walczak |
| Retta Goggin | Angelo Maccarone | Doris S. Pritchard | Florence C. Walters |
| Mary Goin | William T. Mace | Bill J. Pyles | John M. Walters |
| Aylett W. Goode | James Madine | Emily C. Ramstetter | Jerry Ward |
| Mildred C. Goode | Donald W. Maphis | Frances J. Rankin | Janet Y. Webb |
| Iris W. Gordon | Marguerite S. Mattox | Virginia P. Reynolds | Nancy White |
| Shirley V. Gordon | Doris H. McClammy | Jay W. Robinson | Patricia R. Whitfield |
| Ella M. Gore | George McClammy | Stewart T. Rodgers | David G. Williams |
| Marguerite B. Gourlay | Alicia B. Meyer | Bernice M. Rodgerson | Hudson H. Williams |
| Bonnie Gregory | Seiko Miller | Phillip E. Rodgerson | Juanita J. Williams |
| Carolyn D. Gregory | Nancy E. Misicko | Robert S. Rosenbaum | Goodwin |
| Mary A. Hailman | Ashby G. Mitchell | Mary B. Ross | Jean D. Witt |
| Otto F. Hamilton | Mary L. Mitchell | Eugene A. Rowland | Priscilla W. Woll |
| Richard P. Harris | Gertrude E. Moore | Phyllis B. Roxburgh | Ellen P. Womack |
| John D. Harwood | Virginia Moore | Mary Etta Sage | Frances B. Wood |
| Blanche Hawks | Lewis H. Morgan | Kathryn A. Schmeding | Magdalene W. Wooten |
| Doris Helbig | Roveta F. Morgan | Vernon Schrag | Donald A. Yeatts |
| Reed R. Henderson | Helen H. Morris | Frank G. Schwall | Dorothy Zehmer |
| Ruth Hodge | Lewis I. Myers | David S. Scott | Virginia Zimmermann |
| Dorothy D. Hopkins | Ray Nale | Charles L. Seals | John F. Zuraw |
| Robert L. Huber | Violet Nale | Doris M. Shea | |
| Mary Ann Jackson | Edward L. Napier | Ann R. Sheriff | |
| James R. Jeans | Dolores Nichols | Jean Sims | |
| Dorothy Johnson | Hugh E. Nichols | Lucille E. Smith | |
| J. Leonard Johnson | Jerome S. Nichols | Mary F. Smith | |
| William Johnson | Diane Nininger | Ray Snidow | |

CAUSES TO Support

The Team Member Crisis Fund is a lifeline for our colleagues in need during emergency situations—a blessing for those who experience a crisis and need extra support. Each LifeSpire community has a dedicated Crisis Fund to support their team members, and gifts can be designated to the community of choice.

CRISIS FUND



BENEVOLENCE

A total of \$1,224,000 in benevolent subsidies was awarded to 44 residents in 2024. These subsidies pay for all care-based expenses to eligible contracted residents who, through no fault of their own, have outlived their assets. Benevolence provides peace of mind and the opportunity to remain in the homes they know and love. In addition to safe, secure housing, the Benevolence Fund covers nutritious meals, prescription medications, physical and rehabilitation therapy and skilled nursing care to keep older adults healthy and active.

“ We had not expected to ask for this, but when it did become necessary, your generous response was a real blessing and will continue to be so. ”

“ During our family’s time of need, it was a blessing to receive support from the Foundation. The grant allowed us to focus on our emotional needs instead of our financial needs. I will be forever grateful to those that have contributed to support their colleagues. ”

SPIRITUAL LIFE

Faith was at the core of the organization's mission in 1949 and remains a top priority for residents living in a LifeSpire community today. Feeling connected to something larger gives life meaning. A personal connection to faith helps make adults happier and healthier. Spiritual practice helps older adults overcome depression and fight disease, boosting personal wellness, growth and longevity. In LifeSpire of Virginia communities, faith is also one of the primary ways residents connect with one another.

Chaplains are available at each community, serving as resources for residents, families and their fellow team members. Chaplains support the spiritual journey of everyone, offering blessings in times of joy and celebration, and encouragement in times of crisis, need and bereavement.

Gifts to the Spiritual Life Fund support the chaplains and the spiritual enrichment programs in each LifeSpire community. Spiritual Life Fund grants are made available annually to pay for resources which each community can use for their spiritual enrichment.

Grants from the Spiritual Life Fund include:

- Songbooks and supplies for a new Taizé worship and prayer experience
- Grief and bereavement support resources
- New sets of chimes to be used in worship services and other musical offering opportunities
- Faith-based lecture series
- Appreciation luncheons for volunteer clergy

“Receiving scholarships from LifeSpire not only recognized my hard work and dedication, but also gave me the opportunity to pursue college without the overwhelming burden of financial stress.”

- Ava Brown,
Lakewood Culinary



\$30,000 awarded in 2024

EDUCATION FUND

The Team Member Education Fund provides financial assistance through scholarships to eligible team members, their children and grandchildren who pursue opportunities for higher education. Our organization depends on the talent and dedication of our staff, and the impact of these awards extends to our residents as trained and educated employees deliver the highest standard of care, service and hospitality. Gifts are welcomed to invest in the education of our team members who work to make our communities warm, welcoming and safe places to live.

“Our Friendsgiving event honored the dedication of clergy and other community members whose leadership and unwavering commitment to God are a guiding light at The Summit. They enrich our worship services and remind us of the strength found in unity, faith, and service to others. As we gathered in gratitude, we recognized the vital role they play, not only in their own congregations but in the spiritual well-being of our residents. The event provided a wonderful opportunity to meet one another and further strengthen community relationships.”

- Jacob Palma, Chaplain at The Summit



Faith. Wellness. Community.

3961 STILLMAN PARKWAY
GLEN ALLEN, VIRGINIA 23060

NON-PROFIT ORG
US POSTAGE
PAID
WAYNESBORO VA
PERMIT 129

five communities. one vision.



WHERE FAITH, WELLNESS AND COMMUNITY FLOURISH.

LifeSpire of Virginia's five communities offer many choices of apartments and homes in beautiful and inviting settings along with access to continuing care as needed. The AgeSmart program enables members to age in place, regardless of location. Take advantage of the security of knowing the future is well planned in an atmosphere where faith, wellness and community flourish.



The Virginia Baptist Homes Foundation is the philanthropic arm of LifeSpire and provides support to residents and team members through its four funds—benevolence, crisis, education and spiritual life.



TO LEARN MORE, CALL (804) 521-9214 OR VISIT LIFESPIRELIVING.ORG